

# H.R.L

HAIGH RAIL LIMITED

Railway Engineering Contractors



DYNAMIC YET FLEXIBLE PROJECT SOLUTIONS



# CONTENTS

<b>WHO WE ARE</b>	<b>03</b>		
Introduction	04	Mick Downing	23
		Professional Head of Welding	
<b>OUR BUSINESS VISION</b>	<b>06</b>	Claire Haigh	24
Core Values	07	Finance Director	
<b>OUR SERVICES</b>	<b>08</b>	Keiran Clarke	25
• Track Renewals and Maintenance	09	Civils and Resourcing Director	
• Minor Works	10		
• Welding	11	<b>WHAT SUCCESS LOOKS LIKE</b>	<b>26</b>
• Level Crossings	14	• Rope Access Core Drilling	27
• Haulage	15	• Network Rail Vegetation Management Project	28
• Civils and Labour	16	• Spondon Level Crossin	29
• Vegetation Management	19	• Watford South Junction	30
		• Gresty Lane, Crewe	31
		• Todmorden Curve	32
<b>OUR TEAM</b>	<b>20</b>		
Chris Haigh	21	<b>GET IN TOUCH</b>	<b>33</b>
Managing Director			
Dan Foster	22		
Engineering Director			



# WHO WE ARE





Haigh Rail Ltd. was formed in 2011 to supply the highest quality multidisciplinary skills to the rail industry. We believe an opportunity exists for a fully mobilised company of rail specialists to perform a superior standard of workmanship than currently exists – offering genuine value for money. In doing so, we aim to gradually improve Britain’s railway.

We’ve already achieved a great deal, working with some of the biggest names in the rail industry, and that has largely been down to our people. Each colleague is hand-picked based on their expertise and track record of safety and delivery within the rail industry.

We have been awarded a Principal Contractors Licence (PCL), allowing us to act as a main contractor on Network Rail UK controlled infrastructure.

Our permanent way (P-way) division consists of track renewals and maintenance; and minor works – offering a fully managed lump sum, fixed price delivery service for mainline railway systems.

Alongside this experience, our team of directly employed specialists within our welding division is bolstered by a number of apprentices. Working under Professional Head of Welding, Mick Downing, they are an integral part of the team, helping us to create a sustainable workforce for the future.

When that workforce is deployed on the most important projects in the industry, answering the government and Network Rail’s remit for creating a world class transport system, it goes hand in hand with Haigh Rail’s vision to help build a better railway for Britain.



‘Each colleague is hand-picked based on their expertise and track record’



‘We look forward to working with you’



Over the last few years we have rapidly added to our provision, with a fully compliant haulage service for clients in the rail and non-rail sectors.

Additionally, we have an expert civils and labour division, Haigh Resourcing, supplying fixed priced solutions and multi-disciplinary labour to some of the largest projects in the building, construction and rail industries.

The division also has dedicated vegetation management teams that add an extra facet to our capability, helping us to keep the UK's infrastructure running smoothly. The team also completes rope access core drilling using its IRATA certificated operatives.

We've developed a Level Crossing Construction capability and have an experienced team of specialists who have a comprehensive understanding of the design, construction and maintenance of all Level Crossing types.

We have completed successful projects, for among others, Network Rail, Siemens and Atkins.

We look forward to working with you.



# OUR BUSINESS VISION





Our core values define our business behaviours. These values form part of a comprehensive set of principles, which are integrated into business operations through management policies and practices and by means of decision-making processes. They seek to drive action and resolution and raise empowerment and engagement.



**SAFE**

Creating a safe work environment is critical to the success of our business. All persons that come into contact with our activities have the right to feel safe.



**RESPONSIBLE**

We strive to do the right thing for our clients, our people and the communities in which we work.



**QUALITY**

We look to create a continuously improving quality culture. We encourage positive behaviours and a questioning attitude while doing our work, which motivates us to help each other and resolve problems quickly.



**PEOPLE**

We empower our people to challenge the norm. We ensure that they have the right skills and knowledge to deliver our activities efficiently and effectively.



**COLLABORATE**

We promote collaborative behaviours between our people and those of our clients. These extend to the alignment of objectives, processes and structures for the joint delivery of work.



# OUR SERVICES





## Track Renewals and Maintenance

We are an established multi-disciplinary track renewal and maintenance service provider delivering major permanent way projects covering renewals, maintenance and engineering services.

These are the services we deliver for major permanent way projects:

S&C plain lining  
and new track  
installation

Hollow  
bearer  
installation

Plain line  
installation

Point  
condition  
surveys

IBJ (insulated  
block joints) and  
HB surveys  
(hollow bearer)

IBJ installation  
and recovery

Stressing/  
tamping/  
handback  
works





## Minor Works

Haigh Rail has a dedicated minor works rail division that specialises in delivering minor P-way, civil engineering and maintenance works up to a value of £250,000, on projects throughout the UK.

We offer a fully managed lump sum, fixed price priced delivery service, providing a full turnkey labour, plant and materials solution, for mainline railway systems.

Our long-term clients include infrastructure owner and maintainer Network Rail and railway systems giant Siemens. The minor works team also supplements our major works division in conjunction with their major plain line and S&C rail renewals projects. We typically deliver the following minor civil engineering services on schemes up-to £250,000:

Troughing  
and route  
works

LOC bases  
and foundation  
works

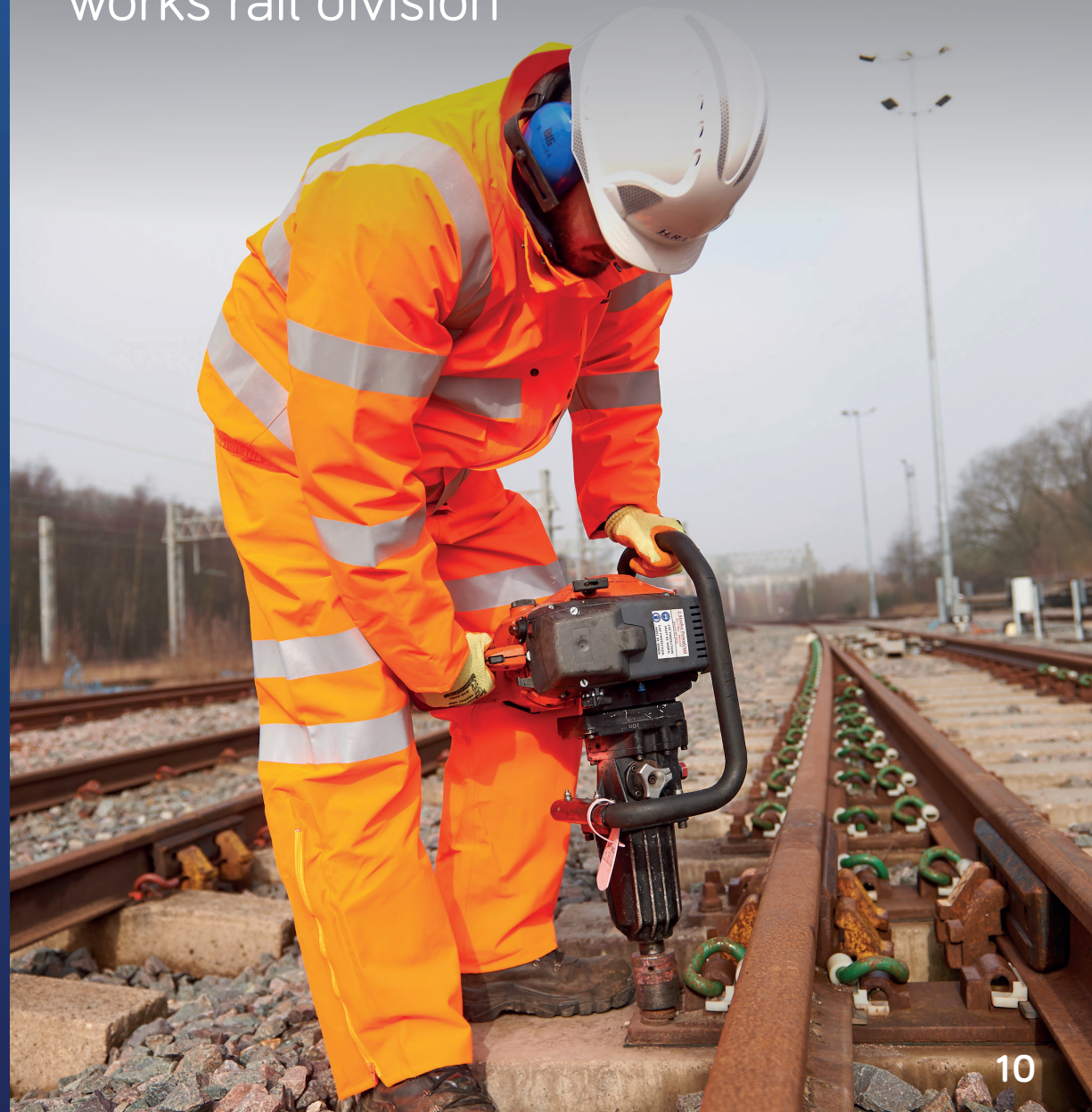
Retaining  
walls

Road and rail  
access point  
construction

Lineside  
fencing

UTX (under-track  
crossing) and  
URX (under-road  
crossing)

# ‘Haigh Rail has a dedicated minor works rail division’





## Welding

Welding is arguably the most important provision to the rail industry. That's why our team of directly employed specialists is mobilised from two offices spanning the north of the country, ready to respond to emergencies and short-term demands.

‘Welding is  
arguably the  
most important  
provision to the  
rail industry’





## Welding

Mobilisation is our principal capability and we have a team of directly-employed specialists standing by to react to the requirements of rail operators 24 hours a day, seven days a week. Due to our unparalleled industry experience, we are able to foresee issues before they arise. This, coupled with our ability to plan all aspects of a job, means we succeed where others may not.

## Experience

Our team boasts a track record that few, if any, other welding divisions in the industry can match. Professional Head of Welding Mick Downing has 40+ years experience in both the national rail and light transit sectors.

## Safety


This is our number one priority and we are proud to report an exceptional safety record, with very few incidents to date. We review and report on our safety policy on a daily basis.

## PPE care

We employ a specialist PHS cleaning system for all work coveralls. This ensures the flame- retardant quality is retained, optimising the safety of our welding team.

## Technology

Making use of the latest technology gives our welding operatives an important edge. For example, each member of our welding team has access to the thermit welding app, bringing them the latest information as it becomes available.



‘Safety is our  
number one  
priority’



Our services include the following, but we are adding to them all the time:

Network Rail-approved manual metal arc welding capability

Network Rail-approved grinding capability

Specialist groove rail welding capability for light transit projects

S053/54 weld inspectors for switch and crossing works

Aluminothermic weld inspectors

Burning

Weld planning

Wide gap welding on 39E1/80A

Wide gap welding L50/L68/L80 in all profiles





## Level Crossings

Haigh Rail has an experienced team of Level Crossing specialists, that have a comprehensive understanding of the design, construction and maintenance of all types of Level Crossing.

Our in-house team has experience with road, agricultural and pedestrian crossings and with a dedicated Permanent Way division – which enables us to understand all track layouts and materials – so that we can advise on the most suitable products and materials for each Level Crossing project.

Adding this capability in Track and Civils, to our in-house Haulage and Vegetation Management divisions and with a Principal Contractors Licence in place, allows Haigh Rail to provide a one-stop solution for Level Crossing projects.

Our specialist team, which has an excellent reputation within the rail industry, has extensive experience gained from successfully delivering level crossing schemes on UK rail infrastructure.

1We ensure that our team keep abreast of the very latest rail standards, techniques and products relating to Level Crossing installations. This enables us to recommend the very best possible solution for every project.

Our Level Crossing team can also design, install and remove Road Rail Access Points (RRAPs).



‘We have experts that can design, construct and maintain all level crossings’



## Haulage

Our haulage provision offers a valuable and cost-effective service and is available for clients in all industry sectors. In addition to our core rail provision, we work with general hauliers, and lift and shift companies, container companies, utility companies, and plant and civil engineering companies – all of which benefit from our valuable expertise, experience and equipment.

### Scania R Series

The basis of our haulage service is a 2023 Scania 8-wheeled rigid wagon complete with a 71 tonne/metre FASSI crane. The wagon also has front legs to provide clients with a full 360-degree lifting capability, The lorry also has slue locks fitted for working railway lineside, or adjacent line open (ALO) working.

The wagon is fully compliant with all the latest safety and environmental features including cyclist cameras, recording cameras, Euro 6, side restraints and is available nationwide for all rail related projects, with cable A frames for cable distribution.

In industries where reliability is the key, our crane wagon is built for the harshest of environments and full of the very latest features. This enables us to deliver no compromises with standards of service, to enhance the project experience and provide each client with a robust haulage offering.

All Haigh Rail Limited haulage operators have PTS, CPCS, ALLMI crane training, First Aid and ALO training. We also have Lift Planning and Appointed Person capabilities should clients require this support.

‘Our haulage provision provides vital support to our construction and rail industry partners’



**HAIGH**  
**HAULAGE**  
a division of **H.R.L.**  
[WWW.HAIGHHAULAGE.COM](http://WWW.HAIGHHAULAGE.COM)



## Civils and Labour

### Civils

Haigh Resourcing undertakes civil engineering works on projects throughout the UK. We offer a fully managed lump sum, fixed-price priced delivery service, providing a full turnkey labour, plant and materials solution for our clients' projects.

Typical fixed-price projects include:

Excavation and Earthworks

Grouting Works

Brickwork and Masonry

Steel Reinforcement

Confined Spaces Works

Ducting

Bridge Replacement and Repairs

Drilling and Grouting

Under Track and Road Crossings

Heritage Projects

Core Drilling (rope access)

Tunnel Repairs

Troughing Works

Reinforced Concrete Construction

Mortar Repairs

General Building Works

Formwork

Gabion Baskets

'We offer our customers a flexible approach to contracting and can be engaged in many different ways'

**H**AIGH  
**R**ESOURCING  
a division of **H.R.L.**  
HAIGH RESOURCING LIMITED

[WWW.HAIGHRESOURCING.COM](http://WWW.HAIGHRESOURCING.COM)



## Fencing

Haigh Resourcing are a specialist Fencing Contractor for the supply and installation of Railway Boundary, Security and Temporary Fencing for Network Rail, TFL and Light Rail systems, as well as Fencing installations for other transport infrastructure and construction sites.

Haigh Resourcing has vast experience installing the following products on railways, other transport infrastructure and construction sites throughout the UK.

- Boundary Fencing
- Security Fencing
- Railway Fencing
- Temporary Fencing
- Gates
- Handrailing

## Site Access Solutions

Haigh Resourcing provide railway site access solutions for Network Rail, TFL and Light Rail systems, as well as site access installations for other transport infrastructure and construction sites.

Haigh Resourcing has vast experience installing both temporary and permanent site access solutions on railways, other transport infrastructure and construction sites throughout the UK.

### Pedestrian Track Access

- Temporary Site Stairway Safe Access Systems
- Permanent Site Stairway Safe Access Systems

### GRP Platforms

- Safe Refuge Platforms

### Access Route Upgrades

- Safe Cess Walkways

### Temporary/Semi Permanent RRAP's

- Softwood or Hardwood Construction

### Permanent RRAP's

## Core Drilling

Haigh Rail Limited's Civils Division undertakes core drilling for rail clients throughout the UK.

The team is additionally IRATA (Industrial Rope Access Trade Association) certificated, which has allowed us to complete many projects and complex sites along the railway and highway infrastructure as alternative option to scaffolding.

Our IRATA Level 3 operatives enable us to deliver a fully managed service for clients.

Our roped access deployments are commonly used for vegetation removal, diamond core drilling at height, railway asset examination work and much more.





## Labour

Our reputation for the supply of multi-disciplinary labour in the building, construction and rail industry is second to none. We are a trusted partner to many clients and have worked on some of the UK's most important infrastructure projects.

We understand that it's not just about finding people with the right skills and experience. It's also about finding people with the right attitude. We offer our customers a flexible approach to contracting and can be engaged in many different ways.

We supply highly qualified permanent, temporary and contract personnel in the following roles:

Multi-skilled  
trades

Railway safety  
critical staff

M&E trade  
professionals

Plant  
operators

Labour  
supply

Project  
engineers

Project  
managers and  
site agents

Railway track  
gangs





## Vegetation Management

Haigh Resourcing offers a safe and secure service to our clients in respect of vegetation management and invasive weed control.

We have a highly qualified team of skilled personnel and are able to undertake works on behalf of clients operating throughout the UK infrastructure industry.

Our teams are available 24/7, for both planned works and emergency call-outs.

Enabling Works

Vegetation Clearance

Earthworks

Lineside Management

Leaf-fall Clearance

Invasive Weed Control

Grounds Maintenance

Landscaping

Arboriculture

Vegetation Surveys

Ecological Mitigation

‘Our de-veg teams are available 24/7’



# OUR TEAM





**Chris Haigh**  
Managing Director

Chris has achieved a great amount in a distinguished career that began in 1998.

He started as a Trainee Technical Engineer with Centrac (Carillion), where he studied for a BTEC in Civil Engineering whilst gaining valuable on-the-job training. He soon gained his first promotion to Supervisor/Site Manager, delivering major S&C renewals works on the West Coast Mainline. His career continued to develop at a great pace at companies including Network Rail and Babcock Rail.

Having amassed a wealth of valuable industry experience over the next few years, Chris decided it was time to pursue his growing ambition to improve on the practices and procedures of the companies he'd worked for. In 2011, he formed Haigh Rail Ltd, where he is Managing Director. He has worked with some of the industry's biggest clients, including Network Rail, Siemens, Atkins and Buckingham Group.

Since it was founded, the business has grown considerably, including several complementary divisions operating across the rail, construction and engineering sectors. With a rapidly-expanding client portfolio, it is already making a name for itself as one of the industry's foremost providers of high-quality multi-disciplinary services for the UK's infrastructure.



‘He has worked with  
some of the industry’s  
biggest clients’



## Dan Foster Engineering Director


Dan has over 20 years' experience on the UK's railways, proving himself to be a highly effective Project Manager and delivering success on a number of high-profile projects within the P-Way division.

He began his career at Balfour Beatty Rail Maintenance and Jarvis Maintenance, moving to GrantRail as Assistant Project Manager. Since then he has worked at Carillion Rail, Babcock Rail and AmeySersa – handling a wide range of multi-disciplinary projects including S&C renewals and P-Way engineering.

Working on a number of high-profile projects, Dan has achieved several industry accolades during his career, including the award for Rail Civil Engineering Project of the Year 2005 (for work to link the Birmingham and Leicester lines).

Dan joined Haigh Rail Ltd. in March 2015 and has employed his vast industry experience to help the company to go from strength to strength, overseeing the successful delivery of a vast array of P-Way projects, from major S&C renewals to minor sleeper changes.

However, Dan and his team are not just about on-site delivery prowess, their skill base also extends to providing constructability advice too. This engineering delivery know-how is currently supporting the feasibility and design process on some of the biggest mainline and metro rail engineering projects in the UK.



‘Dan has achieved  
several industry  
accolades during  
his career’



## Mick Downing Professional Head of Welding

Mick is a proven, all-round professional with four decades of railway experience. In that time, he has gained a formidable skill set and is equally at home on major national P-Way renewals, private heritage railways or crane projects.

He has worked as Welding Manager or Head of Welding at a number of high-profile organisations including British Rail, Trackwork Ltd, Carillion and Renown Railway Consultants Ltd.

At Haigh Rail Ltd, where Mick has worked since 2014, he is responsible for workforce development, with the aim of offering the best welding, grinding and inspection services in the rail industry. He is also responsible for supporting client health and safety file traceability hand back.

For Mick, safety is a priority on every job, through implementation of Life Saving Rules. He also firmly believes that teamwork, respect and trust are essential requirements for success.

‘Mick is a proven,  
all-round professional’





## Claire Haigh Finance Director

Claire is a qualified accountant and joined Haigh Rail in 2015 to lead the finance and commercial functions, having amassed a wealth of rail industry knowledge whilst working for transport infrastructure giant Siemens.

Claire's rail career commenced in 2006, having served her early accounts apprenticeship in the engineering sector with Invensys Rail (now Siemens) in the company's Birmingham Office. In her role as Assistant Project Accountant, she managed a portfolio of projects each with a potential value of up-to £3m.

Promotion swiftly ensued in 2010, as Claire was then moved onto Project Accountant status for a number of individual schemes up-to £30m, which involved reporting to the Senior Management team at Siemens' Birmingham and Manchester regional bases.

As a result of Claire's hard work and abilities, she was promoted to a senior accountancy role with Siemens, which involved mentoring and managing accountancy staff and acting as an advisor to the board as required. Within a year, Claire became Regional Finance Manager, managing a large portfolio and a complete finance unit.

Claire moved on from the business in 2015, excited by the prospect of joining a new, fast growing contractor in Haigh Rail; with her corporate experience at a senior level, Claire is looking to drive the necessary fiscal efficiencies into the company to support its growth plans.

‘Claire is looking to drive the necessary fiscal efficiencies into the company to support its growth plans’





**Keiran Clarke**  
Civils and Resourcing Director

Keiran is a dynamic resourcing professional with a high-profile background.

He leads Haigh Resourcing – Haigh Rail's civils and labour division – and reports directly to Managing Director Chris Haigh, with full operational and P&L responsibility for his division.

A background of engineering underpins Keiran's infrastructure industry credentials, which started nearly two decades ago when he joined Carillion's rail systems business. Progressing through the ranks at Carillion, Keiran worked extensively for the track business as part of a team, delivering some of the most important rail projects in the Midlands and North West of England.

Moving into a managerial role in 2004, Keiran has since gained a wealth of experience working with high-profile clients and successfully managing large and varied portfolios covering rail, civil engineering, highway infrastructure and construction.



‘A background of engineering underpins Keiran’s infrastructure industry credentials’



# WHAT SUCCESS LOOKS LIKE





## Rope Access Core Drilling

Haigh Rail's Civils and Vegetation Management division has completed a rope access core drilling and vegetation clearance project at two locations using its IRATA (Industrial Rope Access Trade Association) certificated teams.

We undertake rope access core drilling and vegetation works for rail clients throughout the UK.

### Ashton Viaduct

Our team completed a complex site at Ashton Viaduct for the Transpennine Route Upgrade (TRU) project. The location had no access beneath the viaduct, so all works had to be carried out with rope access.

Haigh Rail successfully delivered 12no 75mm cores at a depth of 3 metres on the North and South elevations of the viaduct.

A possession of the rail line was taken to enable our IRATA Level 3 Operative to set up anchor points to the rails. Our IRATA Level 1 Operatives then descended down into position and set up the core drilling rigs.

On completion of each core, our operatives used an endoscope to record the backing material of the structure. Once the endoscopy was complete, reinstatement of the core holes commenced.

All core samples were sent off for analysis, so that a full report could be produced for the client.

Works were successfully carried out during a 27hr blockade.



### Lower Wharf Street

This site included vegetation clearance of a redundant subway and 2No 75mm Cores to a depth of 3 metres. The subway itself was situated beneath track level, whereby all vegetation was cleared by our trained de-veg teams to expose the subway shaft.

Our IRATA Level 3 Operative then set up anchor points off the palisade fence, to enable our IRATA Level 1 Operatives to descend safely and set up the core drilling rig.

An endoscopy of each hole was undertaken, and the core holes were then reinstated, and a report provided for the client, including a detailed analysis of each core sample.



## Network Rail Vegetation Management Project

Haigh Rail were commissioned to complete a programme of Vegetation Management works. The purpose of the project was to provide a fully managed provision of Arboriculture Services, in order to protect the rail infrastructure, commuters, maintenance staff and 3rd parties from harm.

Haigh Rail were responsible for full planning and execution of all Overhead Line Isolations, as well as all works programme, project and site management requirements.

Our specific site scope of works included:

- Full site Ecology surveying and reporting
- Removal of all vegetation within 6.5m of the cess rails
- Removal of all trees within falling distance of the infrastructure
- Removal of all dying or diseased trees
- Stumps lowered to the topography of the ground
- Woodchip spreading on site to a depth of no greater than 100mm
- Unmanageable lengths of timber left or banded in situ for habitat purposes
- Chemical application for hazardous and invasive plants
- Project Handover

Detailed Ecology Surveys were undertaken by our team of fully trained ecologists in advance of the works and issued to the client prior to works commencing. Once approved and working in line with the ecology reports, our Contract Management team, carried out their own daily ecology reports. This included bird nest, protected species and invasive weeds inspections. All findings were logged, reported and suitable exclusion zones were put in place where required, to protect the local wildlife.



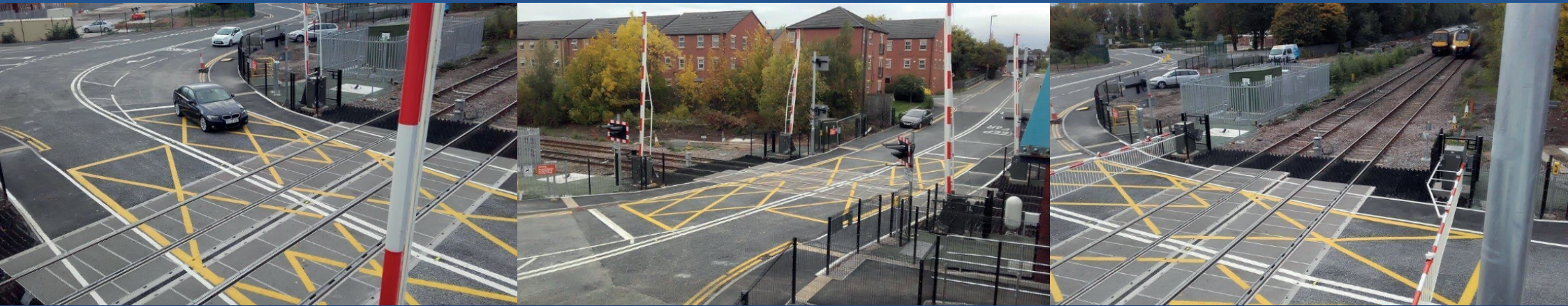
Our highly qualified and extensive team of skilled, trained and competent personnel work 24/7, which, enabled us to produce a programme for both daytime and night-time works.

During night-time working, our in-house isolation teams planned and carried out isolations, so that trees in challenging locations in and around the Overhead Line Equipment could be felled or dismantled to current AFAG (Arboriculture and Forestry Advisory Group) guidance.

The project was successfully completed to meet the customer's requirements and all handover documentation was supplied to meet the project landing requirements.



## Spondon Level Crossing



Spondon Level Crossing was a unique job that Haigh Rail recently undertook on behalf of partner Siemens Rail Automation. The works consisted of a full level crossing deck renewal, plus realignment of the existing footprint to accommodate a new alignment of the highway.

The existing track condition had to be scoped in advance of the works to assess the condition of the track components below the existing level crossing units. Haigh Rail determined that there were defective sleepers within the existing level crossing footprint, which had to be changed prior to the new level crossing being installed. Existing Hollow bearers also needed repositioning and there were existing drainage catchpits that required removing as they fell within new footprint of the level crossing. All sleepers throughout the crossing also needed respacing to enable new crossing panels to be housed.

During the project, Haigh Rail liaised with other stakeholders to allow for the setting out and installation of new kerb lines, as well as the resurfacing works that were required to each side of the crossing.

This required good cooperation and interface management, so that all activities could be fully integrated.

Existing power cables also ran parallel to the dig area which needed to be excavated for the new edge beams, which made digging trenches challenging. However by working carefully and diligently these works were achieved without incident or accident.

Haigh Rail used road rail vehicles to lift the edge beams into place and throughout the works, track levels were monitored by the team to ensure the track geometry was not affected by the works.

In September 2018 the project was completed – with all Level Crossing components installed safely and within the allocated project timeframe. Despite the challenges, Haigh Rail's solution based approach allowed all obstacles to be overcome. This was helped by the fantastic internal capabilities of business, which used its highly skilled in-house Project Engineers and Planners to ensure that a high quality project was delivered.



## Watford South Junction

Supplied and installed 180 hollow bearers

Relocated 2 hollow bearers in final quarter

Provided cable management for 12 hollow bearers

Scrap clearing

Civil engineering works

Midweek night and weekend possessions



Haigh Rail was awarded a contract with Network Rail as a Principal Contractor Licence (PCL) holder at Watford South Junction.

After previous contracts working for Siemens on the Watford Remodelling Project, railway infrastructure contractor Haigh Rail acted as a Principal Contractor in its own right for the final quarter of the project.

The scope of the works for the overall contract included the supply and installation of 180 hollow bearers. Haigh Rail delivered the full scope of works. The final quarter was particularly challenging, whereby Haigh Rail managed the installation of 37 hollow bearers, relocated a further 2 (incorrectly installed by others) and provided cable management to a further 12 (which were again put in by others, this time without the cables being installed). Haigh Rail also cleared the scrap with the use of an RRV to a designated access point.

Haigh Rail was also responsible for the management of the lineside civil engineering works, which included constructing walkways and they also provided a clear and level site compound, which housed the appropriate welfare facilities for the duration of the works. The works were completed to the satisfaction of Network Rail during a series of midweek night and weekend possessions of the line. This is an outstanding achievement – one which is testament to the company's wholehearted commitment to railway assurance.



## Gresty Lane, Crewe

93 insulated block joints installed and 23 recovered

20 point ends converted (11 in the blockade)

62 hollow bearers installed

Replacement of a new set of bull head switches

Installation of a buffer stop

Over 4,500 man hours were worked by Haigh Rail-supplied staff during the blockade

500 tonnes of ballast were renewed



Haigh Rail was contracted through Network Rail and Siemens Rail Automation Holdings to provide a range of works for the re-signalling project at Gresty Lane in Crewe (GRIP 5-8). The works were successfully commissioned during the nine-day blockade.

As is increasingly the case, we were involved early in the development, staging and planning of the track works. This ensured greater ownership, leading to a more successful delivery in all areas. It also created a culture of collaboration in which all parties were consulted throughout the progress of the works. Haigh Rail is an advocate of BS 11000 and embraces the principles encompassed by the standard.

Chris Haigh, Managing Director of Haigh Rail Ltd, said: "Collaboration was key to our success in completing a broad range of track works at Gresty Lane for this re-signalling project which has great importance for the area. I am delighted to report there were no safety incidents, adding to our reputation as a safe and competent deliverer of track maintenance and track renewals works."



## Todmorden Curve

Providing vital engineering services in the construction of a new 400-metre curve

Plain-lining an existing crossover

Maintaining our immaculate safety record, with zero lost time injuries

Enabling the first direct service train for 40 years

The Todmorden Curve project – to reinstate a 400-metre stretch of rail track, which had been closed since 1972 – was a project completed by Haigh Rail Ltd. The company's services were vital in enabling the first direct service to run between East Lancashire and Manchester in more than 40 years.

We were pleased to support the main contractor, Buckingham Group, working on the planning, methodology and P-way installation on a new 400-metre curve, a crossover and a turnout. We also supplied track welding, grinding, stressing, tamping and handback services.

We were proud to deliver our services as part of this project on time, on budget and above all else – safely. Our work on Todmorden Curve allowed us to expand our current client list, building relationships and expanding our portfolio of works.





# GET IN TOUCH



## Head Office

Units 39 and 40  
Momentum Place  
Off Nook Lane  
Bamber Bridge  
Preston  
PR5 6EF

 01772 458000

 [info@haighrail.com](mailto:info@haighrail.com)

## Cheshire Office


Unit 104  
The Courtyard  
Radway Green Business Park  
Crewe  
CW2 5PR

 01270 446595

 [keiran@haighresourcing.com](mailto:keiran@haighresourcing.com)

## South Yorkshire Office

The Old Dairy  
Tranmoor Lane  
Armthorpe  
Doncaster  
South Yorkshire  
DN3 3BS

 01302 342188

 [info@haighrail.com](mailto:info@haighrail.com)